

Something ROTTEN



SOMETHING ROTTEN
IS PRESENTED THROUGH SPECIAL ARRANGEMENT WITH
MUSIC THEATRE INTERNATIONAL (MTI).
ALL AUTHORIZED PERFORMANCE MATERIALS ARE ALSO
SUPPLIED BY MTI.
WWW.MTISHOWS.COM.

THE VIDEOTAPING OR MAKING OF ELECTRONIC OR
OTHER AUDIO AND/OR VISUAL RECORDINGS OF THIS
PRODUCTION AND DISTRIBUTING RECORDINGS OR
STREAMS IN ANY MEDIUM, INCLUDING THE INTERNET,
IS STRICTLY PROHIBITED, A VIOLATION OF THE
AUTHOR(S)'S RIGHTS AND ACTIONABLE UNDER UNITED
STATES COPYRIGHT LAW.



The Oquirrh Hills Performing Arts Alliance presents

Something ROTTEN

BOOK BY
KAREY KIRKPATRICK AND JOHN O'FARRELL
MUSIC AND LYRICS BY
WAYNE KIRKPATRICK AND KAREY
KIRKPATRICK

CONCEIVED BY KAREY KIRKPATRICK AND
WAYNE KIRKPATRICK

ARRANGEMENTS
GLEN KELLY

ORCHESTRATIONS
LARRY HOCHMAN

ORIGINALLY PRODUCED ON BROADWAY BY KEVIN MCCOLLUM
BROADWAY GLOBAL VENTURES CMC MASTRO/GOODMAN
JERRY & RONALD FRANKEL, MORRIS BERCHARD
KYODO TOKYO, INC. WENDY FEDERMAN BARBARA FREITAG
LAMS PRODUCTIONS WINKLER/DESIMONE
TIMOTHY LACZYNSKI DAN MARKLEY HARRIS/KARMAZIN JAM
THEATRICALS ROBERT GREENBLATT
AND JUJAMCYN THEATERS

DEVELOPED IN ASSOCIATION WITH THE 5TH AVENUE
THEATRE, SEATTLE, WA, DAVID ARMSTRONG, EXECUTIVE
PRODUCER AND ARTISTIC DIRECTOR, BERNADINE GRIFFIN,
MANAGING DIRECTOR AND BILL BERRY, PRODUCING
ARTISTIC DIRECTOR





**HELP KEEP
THE MAGIC
ALIVE!**

CONTENTS

<i>Sponsors</i>	4 - 5
<i>OHCAA</i>	6
<i>Resident Staff</i>	7
<i>Production Staff</i>	8
<i>Director's Note</i>	9
<i>Cast List</i>	10
<i>Scenes and Songs</i>	11
<i>Upcoming</i>	13
<i>Theatrical Note</i>	15
<i>Thank You To Our Sponsors</i>	17
<i>Cast Biographies</i>	26
<i>Production Biographies</i>	32
<i>2024 Season</i>	36
<i>2025 Season</i>	37

It's because of generous patrons like you that we are able to produce family-friendly entertainment here at The Empress.

Join in our Empress family today by making a contribution! Your financial gift will provide a more thrilling experience both on stage and behind the scenes for everyone to enjoy. Your gift may be used in the making of costumes, sets, or props. It may be used to help an underfunded actor get the make up or shoes they need for a production. Your gift for certain will help spread the joy of live theatre to all who attend an Empress show.

For more information on how you can become a member and enhance your Empress experience, email empress@empresstheatre.com, visit empresstheatre.com/give.



2024 Sovereign Society Members

Josephine Members (\$5,000)

Rachel & Jason Sabin

Victoria Members (\$1,000)

Eric Barney

Krystle and Barry Ricks

Nefertiti Members (\$500)

Beth Bruner

Barbara Howard

Suiko Members (\$250)

Wade Choules

Sara Hunter

Constance Members (\$100)

David Bruner

David Pack

Celeste Reese

Kimberly Teitter

Lifetime Giving

Jake M. Andersen

Jen Bair

Stephen Bair

Eric G. Barney

Tanner Lindsay

Dr. David F. Pack

Rod and Joline

Walgamott

Aileen Ware

Anonymous

Knights of the Empress,
LLC



Mission Statement of OHPAA

The mission of the Oquirrh Hills Performing Arts Alliance is to cultivate and advance the performing arts in Magna Township and surrounding areas. OHPAA will work to create a distinguished arena for nurturing local talent and to provide cultural and educational experiences for the entire community by maintaining high standards of family oriented, quality programs and performances.

Board of Directors

Chairman: Marie Roe
Vice Chair: Krystle Ricks
Treasurer: Natalie Grange
Secretary: Amanda Robison

Board Members: Barry Ricks - Actor Advocate
Eric Barney
Sara Hunter
Sheay Neilson
Jason Sabin
Rachel Sabin
Jeremy Rowley



Resident Staff

Executive Director Position Open

Artistic Director Candice J. Jorgensen

Assistant Artistic Director Position Open

Audio Technical Director Position Open

Rental Manager Cheryl Cripps

Marketing Director Position Open

Staff Photographer Beth Bruner

Promotional Photographer Ashley Loewer

Front of House Manager Judy Merrill

If you are interested in one of our director positions, please email resume and/or inquiries to Marie at lmroe@empresstheatre.com

Want to Get Involved?

Join us on the third Tuesday of each month.

Board meetings are held at the theatre
at 7:30 PM. Members of the public are welcome and
encouraged to attend.

Board Applications are available and reviewed on a rolling basis.
We encourage all interested individuals to apply!

www.empresstheatre.com/OHPAA



Production Team

Director	Kylee Larsen
Music Director	Aaron Evensen
Choreographer	Hannah Sanders-Smith
Stage Manager	Lisa Shortridge
Costumer	Kylee Larsen, Lisa Shortridge, Emma Cornelius
Egg Creator	Ashely Loewer
Lighting Design	Kayla Martin
Light Tech	Jenny Cannon
Sound Design/ Microphones	Tanner Larsen
Props Master	Lisa Shortridge
Set Design/Construction	Kylee Larsen
Set Painting	Jim Shortridge, Hallie Shortridge



Director's Note

Willkommen, Bienvenidos, Welcome. This show was a pleasure to discover. It is full of references to so many shows from familiar melodies, wonderful lines or stolen characters. This show is a love letter to every theater kid, theater parent, and theater lover alike. If you have ever put on a Character/Jazz shoe this show is for you. If you have ever been handed a drill for the first time on strike and was told to take down that flat this is for you. If you have ever painted the stage until 1am this is for you. If you have ever gone to a Village Inn in pin curls and a FULL face of



makeup, this is for you! And to our parents you are welcome for the free concerts in the car and shower, we thank you for the support. Thank you for the flowers, the Countless tickets and the financial support for us starving artists. And thank you to all of our theater lovers that have never stepped on stage but love to be entertained. We thank you most of all because without you we wouldn't be here, for nothing. YOU are the final cast member, the missing puzzle piece you breathe life into the show more than you know with your laughter, cheers, oohs and ahhs.

This bedazzling show is full of musical and Shakespearean references, quick wit and fun comedic moments with a splash of love, marriage advice and poor choices. I wanted to highlight the actors' talent and put it on display rather than big set pieces, so we went forward with a few benches and a table and sometimes we highlighted the actors by making them become set pieces and tables. With our costume choices we chose shakespearean (stolen and borrowed from other theaters.... and cobbled together to make a hit! Thank you to all of them) finally the ideas behind choreography were all Mrs Hannahs, I'm blown away by the mixture of tap and musical theater moves she has created the perfect show alongside all of the crazy!

Please enjoy the Egg-celent choreography, up-beat music, and the eggs that took way longer than we thought to make.

Break an EGG!

Thank you Lisa, Hannah, Aaron, Ashley, My Cast and the Empress Board.

Kylee Larsen, Director



CAST OF CHARACTERS

Nick Bottom

Sonny Payne

Nigel Bottom

Jonas Stone

William Shakespeare

Bradley Barker

Bea

Taylor Cahoon

Portia

Eliza White

Nostradamus

Caden Terry

Brother Jeremiah

Taylor Brooks

Lord Clapman

Stratford Healey

Shylock

Raiden Yocom

Minstrel

Makayla Porter

Ensemble

Simi Kasala

Izic Copier

Raiden Yocom

McKenna Simmons

Emily Calder Moore

Lizzy Oveson

Elijah Carrillo

Sharon Cornelius

Bailey Thomas

Dominic Cordero

Makayla Porter



ACT ONE

Welcome to the Renaissance

Minstrel and Company

God, I Hate Shakespeare

Nick, Nigel, and The Troupe

Right Hand Man

Bea and Nick

God, I Hate Shakespeare (Reprise)

Nick

A Musical

Nostradamus, Nick, and Company

The Black Death

The Troupe

I Love the Way

Portia and Nigel

Will Power

Shakespeare and Company

Bottom's Gonna Be on Top

Nick and Company

INTERMISSION



ACT TWO

Entr'acte

Welcome to the Renaissance (Reprise)

Minstrel and Company

Hard to Be the Bard

Shakespeare and Company

It's Eggs!

Nick and The Troupe

We See the Light

Portia, Nigel, Brother Jeremiah,
Nick, and Company

To Thine Own Self

Nigel, Nick, Shakespeare,
and The Troupe

Right Hand Man (Reprise)

Bea

Something Rotten! / Make an Omelette

Nick and Company

To Thine Own Self (Reprise)

Nick

Finale

Company



COMING
SOON

Into the Woods

November 8 -
23, 2024



EmpressTheatre.com

Empress Theatre 2024

Auditions
Nov 19

COMING
SOON

EMPRESS THEATRE'S
PRODUCTION OF

— mti's —
BROADWAY **JUNIOR**®
— revue —
raise your voice

FEATURING SONGS BY

LYNN AHRENS - HOWARD ASHMAN - LIONEL BART
CHAD BEGUELIN - NELL BENJAMIN - JARRY BACK
NACIA HERB BROWN - STEPHEN FLAHERTY - ARTHUR FREED
MATTHEW GERARD - SHELDON HARNICK - FRANK LOESSER
ALAN MENKEN - ROBBIE NEVIL - LAURENCE O'KEEFE
BENJ PASEK - JUSTIN PAUL - TIM RICE - STEPHEN SCHWARTZ
RICHARD M. SHERMAN - ROBERT B. SHERMAN
GLENN SLATER - STEPHEN SONDHEIM



JAN 24 - FEB 8, 2025



At This Theatre

The Empress Theatre started as a burlesque house where the Miners could come and spend their time after long hours laboring in the pit. After a couple of years, the venue was transformed into a movie house, showing silent movies on a large screen (If you'll turn your attention to the S row, you will be able to see the remains of the screen from 1930; the black rectangle above the S row). After showing movies until the 1950's, the theatre closed down and remained vacant for some time. In the early 80's, the venue would be owned by Leo W. Ware.

Leo worked tirelessly on renovating the venue. One of the most obvious places is the Green Room (not accessible during shows, if you would like a tour, please contact anyone listed as staff in the playbill), which was dug out by hand with a wheelbarrow and trowel. Leo would spend the last years of his life renovating the Empress.

In 2006, The Oquirrh Hills Performing Arts Alliance (OHPAA) was formed. OHPAA took the keys and finished the work Leo had begun, culminating in the first performance in over 50 years. The first production mounted was Forever Plaid. Leo was among those in the audience opening night. He passed away soon after, having seen his dream come to fruition.

Today we carry on the legacy Leo left behind. Our venue is run solely by volunteers and through funds raised by our generous patrons, volunteers, and board members. The dedication of all who walk through the Empress doors is a testament to true community theatre. As of Evita, the theatre has mounted 150 productions in just eighteen years since reopening with no end in sight. OHPAA and the staff of the Empress hope to continue bringing quality, family oriented theatre to the citizens of Magna and the Greater Salt Lake Valley.





In early 2021, a local group of people formed an LLC and raised the required funds to purchase the Empress Theatre from Aileen Ware and her family. We are grateful to the Ware's for trusting us with their theatre for so long.

This change in ownership has culminated in the changes you see here today! Throughout the years, the Empress has ebbed and flowed, always staying on course with steadfastness.

We are pleased to continue the partnership into the future and remained committed to taking care of this wonderful building.



**Thank You to
our sponsors**

**BULLY LINERS
AND
COATINGS LLC**



**SOFTWARE
TECHNOLOGY
GROUP** [®]

stgconsulting.com









utaharts.org/en/dreamscapes



CREATING THE DREAM

WHAT IS IT? A WORLD OF DREAM REALMS, WHERE IMMERSIVE PHYSICAL AND DIGITAL ARTWORKS TAKE YOU ON AN ETHEREAL JOURNEY.

DREAMSCAPES MANIFESTS THE SURREAL NATURE OF THE SUBCONSCIOUS LABYRINTH SUITABLE FOR ALL AGES AND ABILITIES TO PLAY, EXPLORE AND OF COURSE, DREAM. DON'T MISS THIS OPPORTUNITY TO DREAM WITH YOUR EYES OPEN AS YOU MOVE THROUGH THE COLORFUL VIGNETTES THAT CHANGE THE WAY YOU EXPERIENCE ART.

A PROJECT OF THE NONPROFIT UTAH ARTS ALLIANCE, DREAMSCAPES IS BORN FROM THE IMAGINATIONS OF MORE THAN 100 ARTISTS, BUILDERS AND AUDIO-VISUAL WIZARDS. PERHAPS MOST INCREDIBLE, DREAMSCAPES IS BUILT USING UPCYCLED AND RECLAIMED MATERIALS, MAKING THIS UTAH'S FIRST ENVIRONMENTALLY- SUSTAINABLE ATTRACTION. WITH PARTNERSHIPS FROM AMAZING ORGANIZATIONS LIKE 3 FORM, SALT PALACE CONVENTION CENTER, HABITAT FOR HUMANITY'S RESTORE AND OTHERS, DREAMSCAPES DIVERTS TONS OF WASTE FROM THE LANDFILL. THE END RESULT IS A VISION OF BEAUTY THAT KNOWS NO BOUNDS, A MANIFESTATION ALL DREAMERS CAN EMBRACE.





On Cue Costumes

Rebecca L Fenton

Sponsor and Creator of
Costumes for
Sweeney Todd, Anastasia, and
more coming soon!

FOR INQUIRIES CONTACT
ONCUECOSTUMES.COM



We love the support we get
from our community of
theatres here in Utah!



Special Thanks to



FOR THEIR CONTRIBUTION IN COSTUMES
AND
SET PIECES.

Special Thanks to

WEST VALLEY ARTS CENTER

for their partnership in advertising.

DRAPER HISTORIC THEATRE

Mindy Eckroth and Bradley Barker
for their use of props and costumes

MIDVALE ARTS COUNCIL

For the use of their costumes and
props



Cast Biographies



SONNY IS EXCITED TO MAKE HIS DEBUT HERE AT THE EMPRESS! FAVORITE CREDITS INCLUDE INTO THE WOODS WITH SANDY ARTS GUILD, AS WELL AS SHREK THE MUSICAL, AND 9 TO 5 AT MURRAY HIGH SCHOOL, WHERE HE WAS ALSO A UHSMTA FINALIST IN DIRECTING AND SET DESIGN FOR THE DROWSY CHAPERONE. HE WOULD LIKE TO DEDICATE THIS SHOW TO JONAS STONE AS ALWAYS, SONNY IS THRILLED TO BE IN A ROLE WHERE HE CAN FINALLY RELEASE HIS YEARS OF PENT UP ANGER OUT ON JONAS.



JONAS IS THRILLED TO BE DOING HIS FIRST SHOW AT THE EMPRESS THEATER, ESPECIALLY ONE OF HIS FAVORITE SHOWS! JONAS HAS BEEN PERFORMING FROM A VERY YOUNG AGE, AND HAS LOVED EVERY MINUTE. SOME OF HIS RECENT ROLES INCLUDE EMMET FORREST IN DRAPER AMPITHEATER'S "LEGALLY BLONDE JR" AND ROBERT MARTIN IN MURRAY HIGH SCHOOLS "THE DROWSY CHAPERONE". HE'D LIKE TO THANK ALL OF HIS WONDERFUL FRIENDS AND FAMILY FOR THEIR CEASELESS SUPPORT. ENJOY THE SHOW!



BRADLEY'S FIRST LOVE IS THE STAGE. HE HAS BEEN PERFORMING SINCE HE WAS 8 YEARS OLD AND SOMETHING ROTTEN IS HIS 100TH SHOW! HE FINDS EXTREME JOY EXPLORING NEW CHARACTERS AND BRINGING THEIR STORIES TO LIFE. SOME OF HIS FAVORITE ROLES INCLUDE EMMETT FORREST - LEGALLY BLONDE, PRINCE ERIC - THE LITTLE MERMAID, BILLY CANE - BRIGHT STAR, JIMMY-RAY - BRIGHT STAR, JACK KELLY - NEWSIES, AND MANY MORE. HE WANTS TO GIVE A SPECIAL THANK YOU TO KYLEE FOR GIVING HIM THIS OPPORTUNITY TO PLAY A ROLE THAT'S SO INCREDIBLY FUN, AND SEXY. ;) LISA AND MAKAYLA, FOR ALL OF THE SUPPORT AND LOVE. HIS SISTER FOR ALWAYS BEING HIS ROCK. HIS CAST MEMBERS FOR MAKING THIS EXPERIENCE WHAT IT HAS BEEN. FINALLY, YOU THE AUDIENCE, ENJOY THE SHOW, AND REMEMBER, "IT'S HARD TO BE THE BARD, BABY."





TAYLORE IS EXCITED AND SCARED TO FACE TWO SIDES OF AN AUDIENCE FOR THE FIRST TIME HERE AT EMPRESS! TAYLORE HAS

BEEN DOING SHOWS FOR ATTENTION SINCE SEEING HIGH SCHOOL MUSICAL ON DISNEY CHANNEL IN 2006. SOME OF HER FAVORITE ROLES INCLUDE LUCY IN JEKYLL AND HYDE, URSULA IN THE LITTLE MERMAID, AND BRENDA IN CATCH ME IF YOU CAN. ENJOY THE SHOW AND CLAP REALLY LOUD OR WE WILL ALL TAKE IT PERSONALLY AND IT WILL KEEP US UP AT NIGHT :)



CADEN IS BACK AND ONCE AGAIN EXCITED TO BE PERFORMING ON THE EMPRESS STAGE ONCE AGAIN. YOU MAY HAVE SEEN HIM

IN PREVIOUSLY, IN ROLES SUCH AS ROBBIE IN THE WEDDING SINGER OR SHAGGY IN SCRAM! AT THE COURAGE THEATRE. IF CADEN HAS ANYTHING TO SAY IT WOULD BE: HI MOM AND DAD!



ELIZA WHITE (PORTIA/ENSEMBLE) IS THRILLED TO BE MAKING HER DEBUT AT THE EMPRESS IN THIS

PRODUCTION OF SOMETHING ROTTEN. SHE WAS LAST SEEN IN THOROUGHLY MODERN MILLIE (RITA/WOMAN #4) AT HALE CENTER THEATER OREM IN 2019. IN THE TIME SINCE THEN, ELIZA OBTAINED A B.S. DEGREE IN NEUROSCIENCE AND NOW WORKS AS A RESEARCHER AT HUNTSMAN CANCER INSTITUTE. AFTER A FIVE-YEAR HIATUS FROM PERFORMING, ELIZA IS GRATEFUL FOR THIS OPPORTUNITY AND WOULD LIKE TO THANK THE AMAZING PRO TEAM, HER HUSBAND, FRIENDS, AND FAMILY FOR THEIR SUPPORT AND FAITH IN HER. LASTLY, SHE WOULD LIKE TO THANK HER AMAZING CAST!! "BREAK EGGS" AND ENJOY THE SHOW!





TAYLOR IS SO EXCITED TO WORK WITH SUCH A TALENTED TEAM AND MAKE HIS DEBUT AT EMPRESS

THEATER! AN 11TH GRADE U.S. HISTORY TEACHER BY DAY, HE HAS A PASSION FOR PERFORMING. HIS PREVIOUS ROLES INCLUDE SANTA (A CHRISTMAS STORY), GREMIO (TAMING OF THE SHREW), GENERAL GLOSSOP (JEKYLL AND HYDE), LEWIS (PIPPIN), FRED (A CHRISTMAS CAROL), NAPHTALI (JOSEPH AND THE AMAZING TECHNICOLOR DREAMCOAT). ALONG WITH ACTING, HE HAS ASSISTED THE PERFORMING ARTS TEAM AT UNION MIDDLE SCHOOL IN PRODUCING NEWSIES AND SPAMALOT. HE WOULD LIKE TO THANK HIS AMAZING AND SUPPORTIVE WIFE LEXIE FOR EVERYTHING SHE DOES TO HELP HIM PURSUE HIS PASSION. ENJOY THE SHOW!



MAKAYLA WAS LAST SEEN ON THE EMPRESS THEATRE STAGE AS TZEITEL IN FIDDLER ON THE ROOF. SHE

LOVES THIS THEATRE AND THE WONDERFUL COMMUNITY IS PROVIDES! MAKAYLA HAS BEEN PERFORMING FOR MANY YEARS. SOME OF HER FAVORITE ROLES ARE JOY (CINDERELLA), ADO ANNIE (OKLAHOMA), AND LUCY (BRIGHT STAR). WHEN MAKAYLA ISN'T PERFORMING, SHE SPENDS HER TIME TEACHING JAZZERCISE, AND WORKING AS A LICENSED MASSAGE THERAPIST. "WELCOME TO THE RENAISSANCE! I HOPE YOU ENJOY WATCHING THE SHOW AS MUCH AS WE LOVE PERFORMING IT!"



STRATFORD HEALEY IS A GRADUATE FROM SUU WITH A BACHELOR OF FINE ARTS IN CLASSICAL

ACTING. SOME OF HIS FAVORITE SHOWS HE'S BEEN A PART OF ARE PRIVATE LIVES AND MAN OF LA MANCHA. THIS IS HIS FIRST PRODUCTION AT EMPRESS THEATRE





MY NAME IS SIMI KASALA. I HAVE ALWAYS LOVED MUSICALS BUT HAVE NEVER BEEN IN ONE EVER. SO THE CLOSEST I'VE COME TO BEING IN

ONE WAS SINGING KARAOKE WHERE I CAN. I HAVE ALSO DONE A LOT OF DANCING AT MILLENNIUM DANCE COMPLEX AND JUST DANCE STUDIO AND HAVE DANCED WITH NUTRIBE DANCE CREW AND UNDERGROUND DANCE COMPANY. I KEPT THINKING TO MYSELF THAT IT IS TOO LATE TO GET INTO THEATRE UNTIL I FOUND THE EMPRESS THEATRE AND WAS STRONGLY ENCOURAGED BY CLOSE FRIENDS TO AUDITION AND NOW I AM DOING MY FIRST SHOW HERE. I'M SO VERY THANKFUL FOR THE PRODUCTION TEAM GIVING ME THIS CHANCE TO BE PART OF SOMETHING ROTTEN AND WITH SUCH AN AMAZING CAST.



I AM IZIC PRESTON JACE COPIER, THIS IS BOTH MY FIRST ADULT SHOW AND MY FIRST SHOW AT THE EMPRESS! I JUST LOVE AND ADORE ALL OF THE NEW FRIENDS I'VE MADE!



EMILY CALDER MOORE IS THRILLED TO RETURN TO THEATRE UPON HER RECENT MOVE TO UTAH.

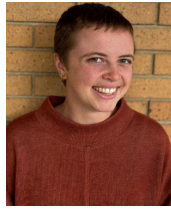
CREDITS INCLUDE NEWSIES (KATHERINE PLUMBER), BEAUTY AND THE BEAST (BELLE), AND LITTLE WOMEN (JO MARCH). EMILY HAS PERFORMED IN PROFESSIONAL AND COMMUNITY THEATRE SINCE 2002, AND IS GRATEFUL FOR CHILDHOOD OPPORTUNITIES TO JOIN A NATIONAL TOUR IN 2004 (JOSEPH AND THE AMAZING TECHNICOLOR DREAM COAT, CHARLOTTE, NC), AND AN ORIGINAL CAST PRODUCTION IN 2007 (A CHRISTMAS DOLL, CHILDREN'S THEATRE OF CHARLOTTE). ALL LOVE TO JACOB, EMILY'S PARTNER OF 10 YEARS, WHO CONTINUALLY PUSHES HER INWARD, AND NOT FORWARD. JACOB- THIS ONE IS FOR REGGIE!





ELI IS EXCITED TO BE BACK AT HIS THIRD SHOW AT THE EMPRESS. YOU MAY HAVE SEEN HIM BEFORE IN "TUCK EVERLASTING" AS

THE HUGO UNDERSTUDY, OR IN "FREAKY FRIDAY" AS ADAM. HE LOVES EVERY OPPORTUNITY HE GETS TO COME BACK TO THE EMPRESS CAUSE IT FEELS LIKE A HOME AWAY FROM HOME. "HOPE YOU LIKE THE DRESS!"



BAILEY IS EXCITED TO MAKE THEIR DEBUT AT THE EMPRESS THEATER! SOME OF THEIR FAVORITE ROLES PLAYED INCLUDE

PENNY PINGLETON IN HAIRSPRAY AND EMILY WEBB IN OUR TOWN, BOTH AT CYPRUS HIGH SCHOOL. BAILEY IS A FIERCE MENTAL HEALTH ADVOCATE AND HOSTS THE DBT IN REVIEW PODCAST AND THE MENTAL HEALTH WITH BAI YOUTUBE CHANNEL. THEY CURRENTLY WORK FOR JORDAN SCHOOL DISTRICT'S EARLY CHILDHOOD DEVELOPMENT CENTER AND ONE DAY HOPE TO EARN A PH.D. IN HEALTH PSYCHOLOGY.



MCKENNA HAS BEEN PERFORMING ON STAGE EVER SINCE SHE WAS LITTLE, AND IS VERY EXCITED TO BE A PART OF THIS HILARIOUS SHOW.

SOME OF MCKENNA'S FAVORITE ROLES WERE WHEN SHE PLAYED RAFIKI IN LION KING JR. AT MT. NEBO JR. HIGH, AND ONE OF THE THREE LITTLE PIGS IN SHREK AT AMERICAN LEADERSHIP ACADEMY. SHE WAS ALSO A PART OF A NATIONALLY RANKED SHOW CHOIR CALLED EVOLUTION WHILE IN HIGH SCHOOL. SHE WOULD LIKE TO THANK HER MOTHER, ALEESA, AND HER HUSBAND, TYTUS, FOR ALWAYS SUPPORTING HER AND TELLING HER NOT TO BE AFRAID TO SING HER HEART OUT.



DOMINIC IS SO EXCITED TO BE PERFORMING SOMETHING ROTTEN. HE HAS BEEN DOING

THEATER FOR 3 YEARS NOW AND WANTS TO CONTINUE GROWING AS AN ACTOR, DANCER, AND SINGER. HIS DREAM IS TO INSPIRE OTHERS ELSE TO TRY AND PURSUE THEATER WHETHER ITS AS A HOBBY OR A CAREER.



ALTHOUGH SHARON IS STARTING OUT A LITTLE LATER IN LIFE, SHE IS THRILLED TO BE IN HER FIRST EVER SHOW! SHARON

GREW UP DANCING AND PERFORMING, AND HAS ALWAYS HAD A LOVE FOR THE THEATER AND MUSICALS. SHE WOULD LIKE TO SAY A HUGE THANK YOU TO HER FAMILY FOR SUPPORTING HER THROUGH ALL THE TIME AWAY FROM HOME AND TO HER FRIENDS FOR THEIR SUPPORT IN COMING TO THE SHOW. SHE WOULD ALSO LIKE TO EXTEND A DEEP HEARTFELT THANK YOU TO THE AMAZING CAST AND CREW FOR HELPING HER ALONG THE WAY AND GIVING HER THE OPPORTUNITY TO LIVE OUT HER DREAM.



RAIDEN IS SO EXCITED FOR HIS FIRST SHOW AT THE EMPRESS THEATER! RAIDEN HAS DONE THEATER FOR

ABOUT 5 YEARS AND SOMETHING ROTTEN HAS BEEN A DREAM SHOW FOR A LONG TIME! SOME FAVORITE PAST ROLES HAS BEEN UNDERLING IN THE DROWSY CHAPERONE, PLANKTON IN SPONGEBOB THE MUSICAL, AND DEWEY IN LEGALLY BLONDE! RAIDEN IS ALSO CURRENTLY RUSTY CHARLIE IN MURRAY HIGH SCHOOLS PRODUCTION OF GUYS AND DOLLS! HE CAN'T WAIT TO PERFORM THIS SHOW!



LIZZI IS EXCITED TO BE BACK ON STAGE AT THE EMPRESS IN THIS HILARIOUS MUSICAL COMEDY! LIZZI HAS BEEN DOING THEATRE SINCE SHE WAS

JUST A WEE LITTLE LAD AND FINDS A HOME ON THE STAGE. YOU MAY HAVE SEEN HER ROCKIN' THE 80S IN THE WEDDING SINGER (EMPRESS THEATRE), AS A DELTA NU IN LEGALLY BLONDE (EMPRESS THEATRE), SAVANNAH IN FREAKY FRIDAY (EMPRESS THEATRE), OR SELLING PAPES IN NEWSIES (DRAPER HISTORIC). LIZZI HAS HAD AN INCREDIBLE EXPERIENCE WITH THE CAST AND THE PRODUCTION TEAM THROUGHOUT THIS WHOLE PRODUCTION AND CANNOT WAIT FOR YOU TO SEE THE FINAL PRODUCTION. SO SIT BACK, RELAX, AND ENJOY THE SHOW!



Production Team Biographies



Kylee Larsen Director

KYLEE IS SO GRATEFUL FOR THE OPPORTUNITY TO DIRECT SOMETHING ROTTEN AT

THE EMPRESS THEATRE! KYLEE LOVES TO STAGE MANAGE AND DIRECT IN THE BEAUTIFUL THEATER COMMUNITY SHE HAS DIRECTED TITLES SUCH AS LITTLE MERMAID AND CHARLEY'S AUNT. ASSISTANT DIRECTED NOT YET PISTA AND HUNCHBACK OF NOTRE DAME. KYLEE HAS WORKED AS A STAGE MANAGER ON OTHER PRODUCTIONS SUCH AS NEWSIES, JEKYLL AND HYDE, MACBETH, ADDAMS FAMILY, AND LEGALLY BLONDE! KYLEE WENT TO COLLEGE FOR TECHNICAL THEATRE AT CASPER COLLEGE, HAS HOSTED AUDITION MASTER CLASSES, HAS BEEN ON THE BOARD OF DIRECTORS FOR THEATER, AND GENERALLY HAS DONE EVERY COMMUNITY THEATER PRODUCTION TEAM ROLE FOR MANY YEARS WITH ALL THE JOY IN HER HEART. THANK YOU TO MY SUPPORTIVE HUSBAND AND AMAZING FAMILY!



Aaron Evensrn Music Director

MUSIC HAS BEEN A LIFE LONG COMPANION FOR AARON. HIS LARGE FAMILY MADE

UP HALF OF THE CHURCH CHOIR WHILE HIS MOM DIRECTED AND DAD PLAYED PIANO. HE WAS TRAINED IN THE FRENCH HORN, LEARNED TO PLAY THE ORGAN FROM HIS DAD, AND PICKED UP THE PIANO SOMEWHERE ALONG THE WAY. HE PERFORMED IN JAZZ BANDS, MARCHING BANDS, PIT ORCHESTRAS, AND FULL ORCHESTRAS. HE SANG IN MANY TYPES OF ENSEMBLES, INCLUDING POP A CAPELLA BACK WHEN IT WAS COOL. HE PERFORMED WITH THE EMPRESS IN SWEENEY TODD AND SPONGEBOB. MANY THANKS TO HIS BEAUTIFUL WIFE FOR BEING A BEST FRIEND AND TRUE LOVE.





Hannah Sanders-Smith Choreographer

HANNAH SANDERS-SMITH IS THRILLED TO BE MAKING HER CHOREOGRAPHIC

DEBUT HERE AT THE EMPRESS THEATRE! WITH OVER 20 YEARS OF DANCE EXPERIENCE, HANNAH HAS GRACED THE STAGE IN ICONIC PRODUCTIONS SUCH AS NEWSIES, THOROUGHLY MODERN MILLIE, SINGIN' IN THE RAIN, AND MUSIC MAN TO NAME A FEW. HANNAH IS DEDICATED TO CREATING DYNAMIC CHOREOGRAPHY THAT EXCITES AND CAPTIVATES AUDIENCE MEMBERS. SHE WOULD LIKE TO THANK HER ASSISTANT CHOREOGRAPHER, MATTIE, FOR HER SUPPORT ON THIS PROJECT. AS WELL AS HER HUSBAND BRIAN, FOR ALWAYS BEING BY HER SIDE.



Lisa Shortridge Stage Manager

LISA IS STILL VERY NEW TO COMMUNITY THEATER AND THIS IS HER FIRST TIME AS A STAGE MANAGER. HER

THEATER EXPERIENCE SO FAR HAS BEEN ON THE STAGE IN SUCH ROLES AS MAMA MURPHY IN BRIGHT STAR AND THE MOTHER IN A CHRISTMAS STORY. SHE LOVES TO BE ON STAGE BUT BEING ON THE PRODUCTION SIDE OF THIS SHOW HAS BEEN INCREDIBLE AND SHE'S LEARNED SO MUCH! SHE'S SO THANKFUL FOR A WONDERFUL FAMILY WHO HAS SUPPORTED HER IN HER THEATER OBSESSION AND HAS MADE IT POSSIBLE FOR HER TO EXPLORE THIS NEW PASSION. AND FOR AN INCREDIBLE PRO TEAM AND CAST WHO HAVE MADE THIS SUCH A MEMORABLE EXPERIENCE!





Karey Kirkpatrick Author

KAREY KIRKPATRICK BEGAN HIS CAREER AS A SCREEN AND SONGWRITER FOR DISNEY ANIMATION WHEREHE PENNED

THE RESCUERS DOWN UNDER AND JAMES AND THE GIANT PEACH. WITH MORE THAN A DOZEN FEATURE FILMS PRODUCED, SCREENPLAY CREDITS INCLUDE CHICKEN RUN (GOLDEN GLOBE NOMINEE FOR OUTSTANDING COMEDY), CHARLOTTE'S WEB, THE HITCHHIKER'S GUIDE TO THE GALAXY, THE SPIDERWICK CHRONICLES AND OVER THE HEDGE, WHICH HE ALSO CO-DIRECTED. HE DIRECTED THE PARAMOUNT PICTURES FILM IMAGINE THAT STARRING EDDIE MURPHY AND CO-PRODUCED, WROTE AND PERFORMED ON THE FILM'S SOUNDTRACK. HE RECENTLY DIRECTED THE WARNER BROTHERS ANIMATED MUSICAL SMALLFOOT FOR WHICH HE ALSO CO-WROTE THE SCREENPLAY AND THE SONGS (WITH BROTHER WAYNE). HE HAS WON A NUMBER OF TONY, OSCAR AND GRAMMY AWARDS AND THAT NUMBER IS ZERO. OTHER CREDITS: HUSBAND OF NADA, FATHER OF SAMI, MAIA AND FINN.



John O'Farrell Author

JOHN O'FARRELL IS ONE OF THE UK'S BEST KNOWN COMIC AUTHORS AND SCRIPT WRITERS. BEST-SELLING NOVELS INCLUDING THE BEST MAN CAN GET, MAY CONTAIN NUTS AND THE MAN WHO FORGOT HIS

. NON-FICTION INCLUDES AN UTTERLY IMPARTIAL HISTORY OF BRITAIN, THE POLITICAL MEMOIR THINGS CAN ONLY GET BETTER AND ITS RECENT SEQUEL PLUS THREE COLLECTIONS OF HIS SATIRICAL COLUMNS FOR THE GUARDIAN NEWSPAPER. O'FARRELL'S BOOKS HAVE BEEN TRANSLATED INTO THIRTY LANGUAGES AND ADAPTED FOR BBC RADIO AND TELEVISION. WINNER, BRITISH COMEDY AWARD. PREVIOUSLY A WRITER (AND LATER PANELIST) ON BBC'S HAVE I GOT NEWS FOR YOU AND LEAD WRITER ON TEN SERIES OF ITV'S SPITTING IMAGE. CURRENTLY WRITING THE SEQUEL TO CHICKEN RUN, AND ADAPTING ONE OF HIS NOVELS FOR SONY INTERNATIONAL PICTURES.



Wayne Kirkpatrick Author

WAYNE KIRKPATRICK IS THE GRAMMY AWARD-WINNING SONGWRITER OF CHANGE THE WORLD BY ERIC CLAPTON (SONG OF THE YEAR). TOP 10 SINGLES INCLUDE EVERY HEARTBEAT, GOOD FOR ME (AMY GRANT); WRAPPED UP IN YOU (GARTH BROOKS); BOONDOCKS, BRING IT ON HOME, LITTLE WHITE CHURCH (LITTLE BIG TOWN); PLACE IN THIS WORLD (MICHAEL W. SMITH). HE IS A MULTI-FORMATTED SONGWRITER WITH SONGS RECORDED BY BONNIE RAITT, FAITH HILL, JOE COCKER,

GABE DIXON, TRISHA YEARWOOD, BABYFACE AND PETER FRAMPTON, AMONG OTHERS. HIS SONGS HAVE BEEN FEATURED IN TV SHOWS (GREY'S ANATOMY, TRUE BLOOD, HART OF DIXIE) AS WELL AS FEATURE FILMS (ALMOST FAMOUS, PHENOMENON, SMALLFOOT). WAYNE LIVES IN NASHVILLE WITH HIS WIFE FRAN AND WAS INDUCTED INTO THE NASHVILLE SONGWRITERS HALL OF FAME FOR 2018. FAVORITE PRODUCTIONS: KOURTNEY, SHELBY AND CARSON.



January 26

anastasia

February 10

April 5

Spongebob

April 20

May 11

Evita

May 25

June 15

**SILENT
SKY**

June 22

July 12

HONK

July 20

July 27

**THE LITTLE
MERMAID**

August 10

August 31

*Fiddler
on the Roof*

September 14

October 5

**Something
Rotten**

October 19

November 9

INTO THE WOODS

November 23

August 24

GALA FUNDRAISER

EMPRESS THEATRE

2024 SEASON

Empress Theatre

2025 Season



Jan 24-Feb 8

PuFFS

Apr 11-26

Once Upon
a Mattress

Jul 18-Aug 2

**PETER AND THE
STARCATCHER**

Sep 26-Oct 11

**BETWEEN
THE LINES**
A NEW MUSICAL

Feb 28-Mar 15

YOU'RE A GOOD MAN
**CHARLIE
BROWN**

May 16-31

ROALD DAHL'S
MATILDA JR
THE MUSICAL

EYT June 19-28

TARZAN

Aug 22-Sep 6

Murdered
TO DEATH

Oct 31-Nov 15

